

VIASURE Respiratory Panel I Real Time PCR Detection Kit

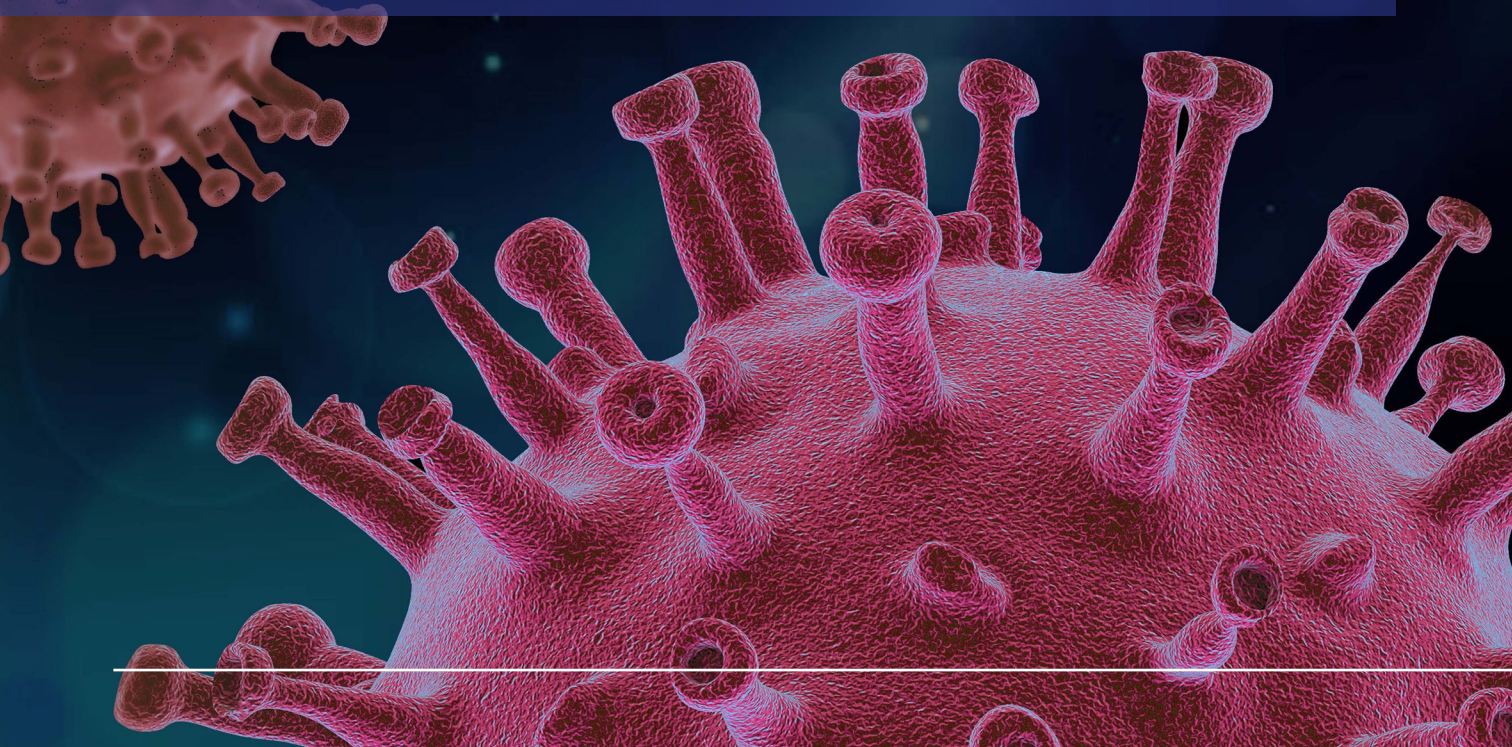
Respiratory infections are a major global health problem, mainly affecting young children and the elderly in low- and middle-income countries. The causative agents of this type of infections are viral or bacterial, being viruses more frequently involved. The management of the infections is crucial to prevent epidemics or pandemics, so accurate and specific diagnosis tools are required.

Respiratory infection diagnosis can be problematic, as a wide range of pathogens can cause acute respiratory infections presenting with similar clinical syndromes. The diagnosis of these viruses and bacteria is traditionally based on cultures and serology methods, which have special requirements and are time-consuming. Therefore, Real Time PCR is the preferred method of diagnostic testing for respiratory infections considering that it is one of the most sensitive and specific diagnostic tool.

VIASURE Respiratory Panel I Real Time PCR Detection Kit is designed for the specific identification and differentiation of Influenza A (Flu A), Influenza B (Flu B) and/or Human Respiratory Syncytial Virus (RSV); human rhinovirus (HRV) and/or human enterovirus (HEV); human Adenovirus (AdV), Metapneumovirus (MPV) and/or Bocavirus (BoV); MERS Coronavirus 1 (MERS-CoV 1); MERS Coronavirus 2 (MERS-CoV 2); Coronavirus (CoV) 229E, NL63, OC43 and/or HKU1 strains; and / or Parainfluenza 1 (PIV-1), Parainfluenza 2 (PIV-2), Parainfluenza 3 (PIV-3) and/ or Parainfluenza 4 (PIV-4) in respiratory samples from patients with signs and symptoms of respiratory infection.

This test is intended for use as an aid in the diagnosis of Flu A, Flu B and/or RSV; HRV and/or HEV; AdV, MPV and/or BoV; MERS-CoV; CoV 229E, NL63, OC43 and/ or HKU1 strains and/or Parainfluenzas viruses in combination with clinical and epidemiological risk factors.

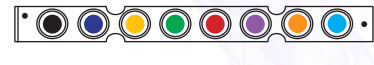
RNA/DNA are extracted from clinical specimens, multiplied using Real Time amplification and detected using specific primers and a fluorescent reporter dye probe for Flu A, Flu B and RSV; HRV and HEV; AdV, MPV and BoV; MERS-CoV; CoV 229E, NL63, OC43 and HKU1 strains and Parainfluenzas viruses.



VIASURE Respiratory Panel I Real Time PCR Detection Kit

VIASURE Respiratory Panel I 8-well strip contains in each reaction well the following reaction mixes for the detection of the specific targets:

- Flu A, Flu B & RSV
- Rhinovirus + Enterovirus
- Adenovirus, Metapneumovirus & Bocavirus
- MERS Coronavirus 1
- MERS Coronavirus 2
- Coronavirus 229E, NL63, OC43 & HKU1
- Parainfluenza 1+3
- Parainfluenza 2+4



Paciente #1

▶▶ Analytical sensitivity

VIASURE Respiratory Panel I Real Time PCR Detection Kit has a detection limit of ≥ 10 RNA/DNA copies per reaction for Flu A, Flu B and RSV; HRV and HEV; AdV, MPV and BoV; MERS-CoV; CoV 229E, NL63, HKU1 and OC43 and Parainfluenzas viruses.

▶▶ References:

VIASURE Respiratory Panel I Real Time PCR Detection Kit 12 x 8-well strips, low profile	VS-RP0112L
VIASURE Respiratory Panel I Real Time PCR Detection Kit 12 x 8-well strips, high profile	VS-RP0112H

CerTest
BIOTEC

CerTest Biotec, S.L.

Pol. Industrial Río Gállego II · Calle J, N°1
50840, San Mateo de Gállego, Zaragoza (Spain)
Tel. (+34) 976 520 354 · Fax (+34) 976 106 268
certest@certest.es | viasure@certest.es
www.certest.es

For more information and use procedure,
read the instructions for use included in this product.

VIASURE/VS02-0822EN